

FORMAÇÃO DE PESSOAL DAS ÁREAS FUNCIONAIS
APOIO TÉCNICO A ACTIVIDADES DE C & T



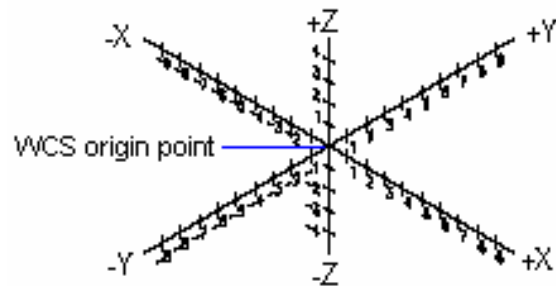
**Sistemas de
Coordenadas
do utilizador
(3 dimensões)**

DESENHO TÉCNICO MODERNO, APOIADO
PELAS TECNOLOGIAS DE INFORMAÇÃO



No AutoCAD, existem dois sistemas de coordenadas

Fixo WCS



World coordinate system

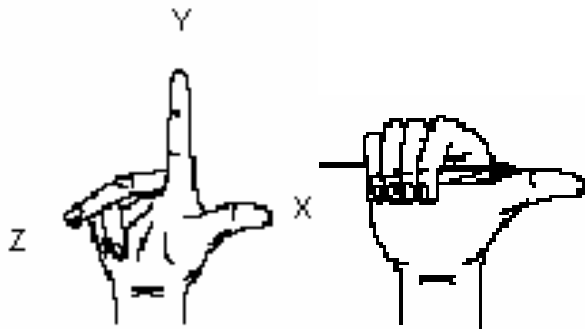
Coordenadas do mundo

X - Horizontal

Y - Vertical

Z - Perpendicular (*fio de prumo*)

Móvel UCS



User coordinate system

Coordenadas do utilizador

X - Horizontal (*no plano da face escolhida pelo utilizador*)

Y - Vertical (*no plano da face escolhida pelo utilizador*)

Z - Perpendicular ao plano XY (*escolhida pelo utilizador*)

UCS

Command: **UCS**

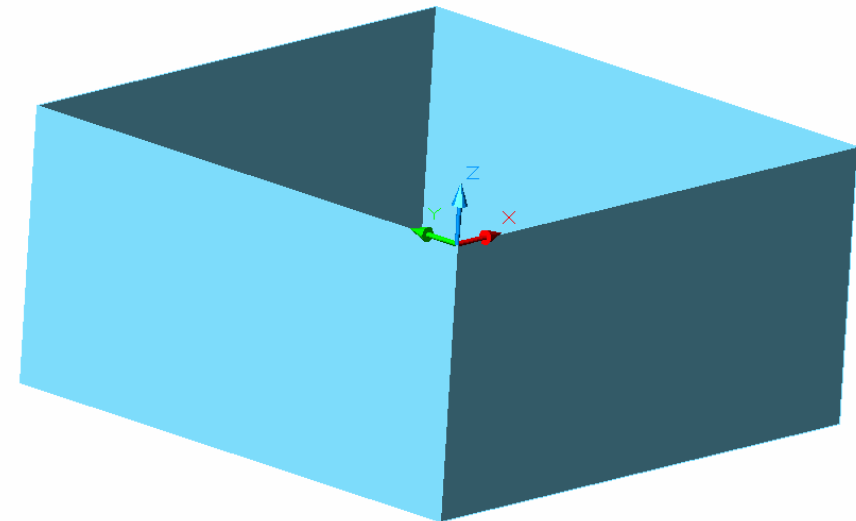
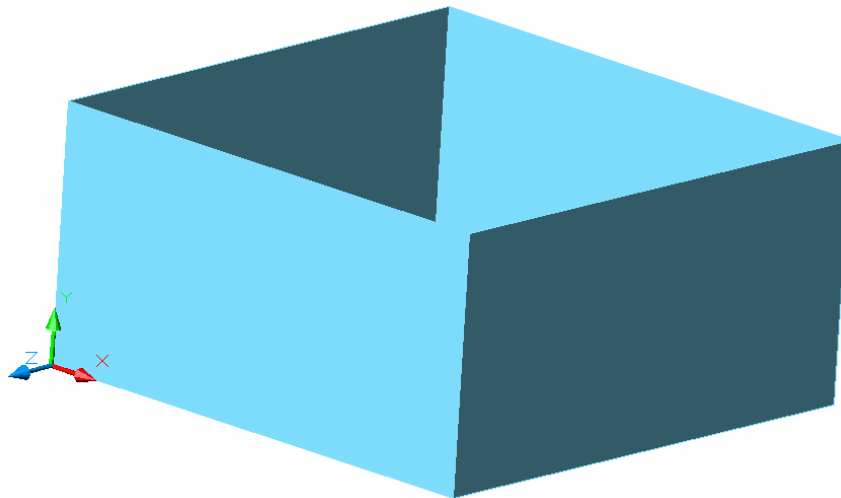
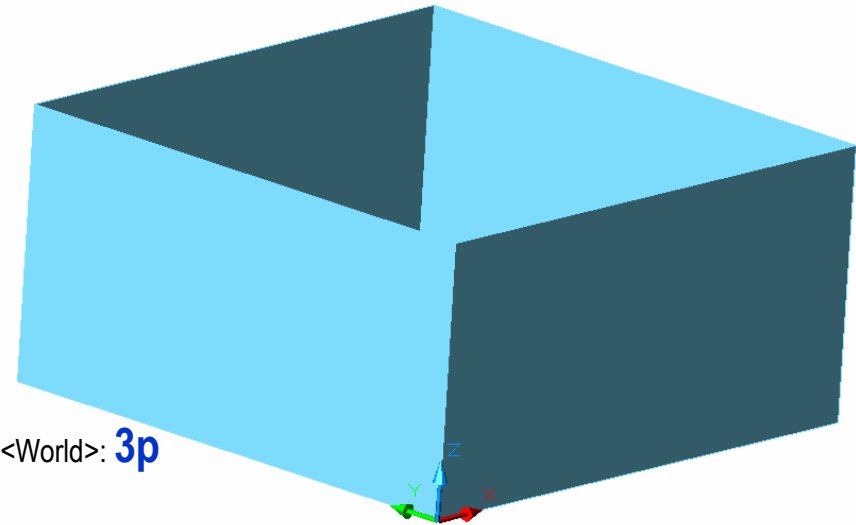
Current ucs name: *WORLD*

Enter an option [New/Move/orthoGraphic/Prev/Restore/Save/Del/Apply/?/World] <World>: **3p**

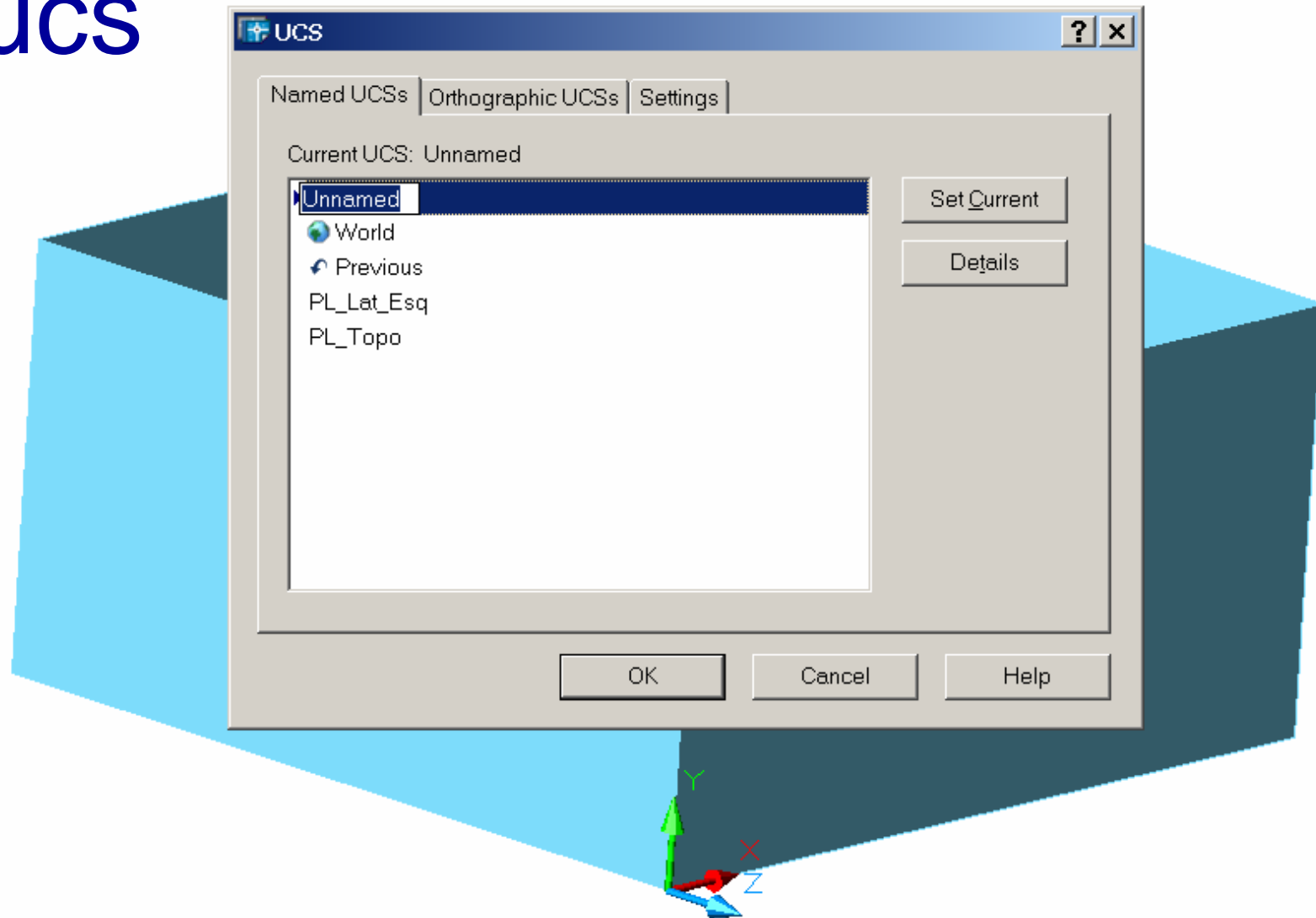
Specify new origin point <0,0,0>:

Specify point on positive portion of X-axis <1.0000,1.0000,0.0000>:

Specify point on positive-Y portion of the UCS XY plane <1.0000,1.0000,0.0000>:

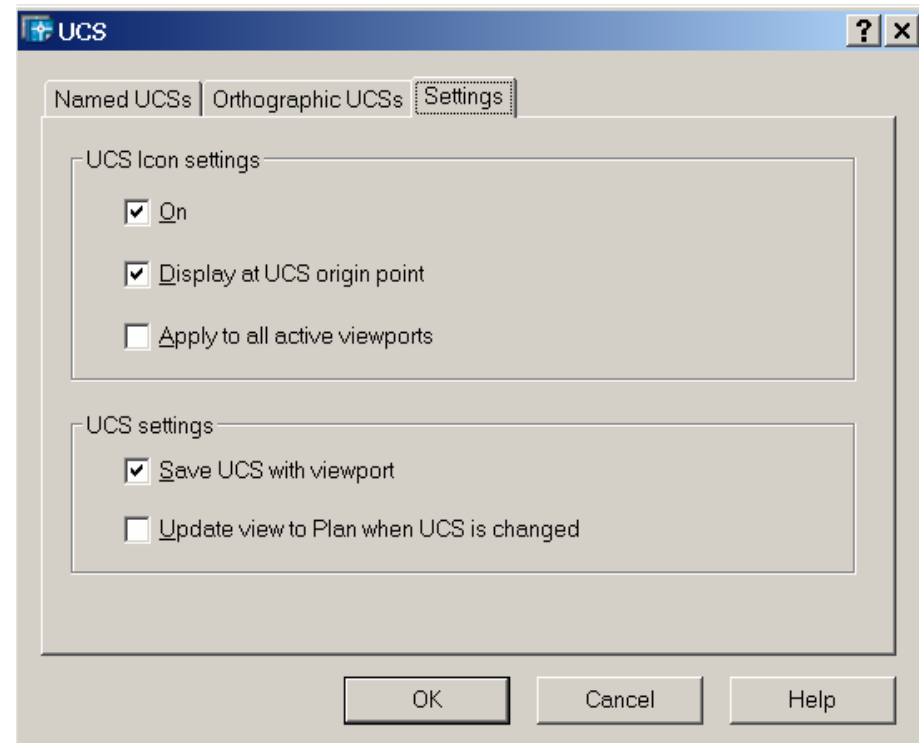
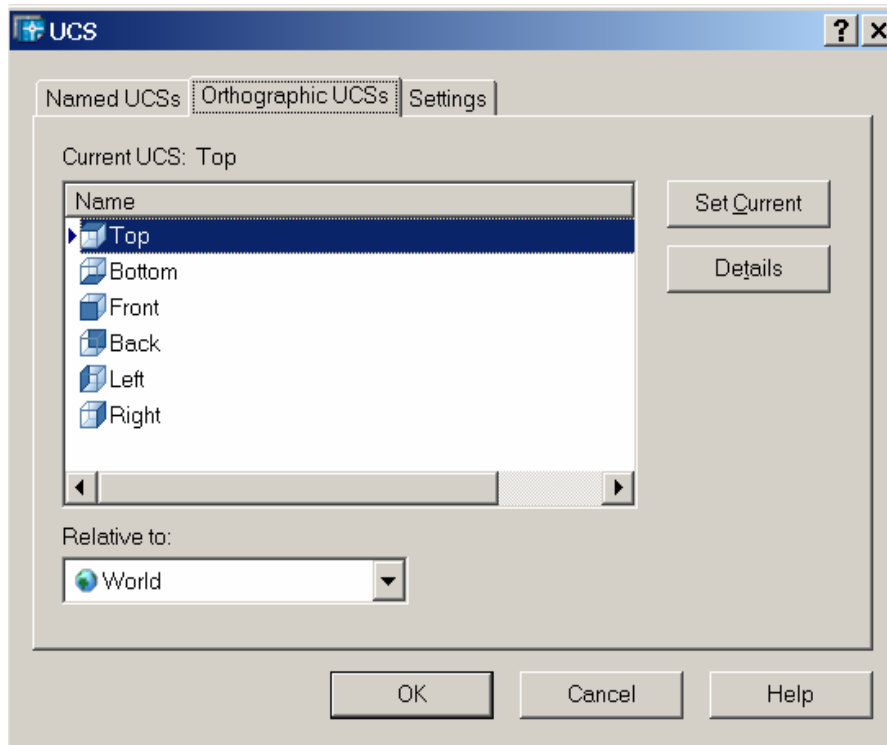


dducs



dducs

ucsman



plan,

dview

view

vpoint

3dorbit

