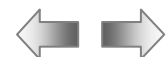


**FORMAÇÃO DE PESSOAL DAS ÁREAS FUNCIONAIS
APOIO TÉCNICO A ACTIVIDADES DE C & T**



**Propriedades
Das
Entidades**

**DESENHO TÉCNICO MODERNO, APOIADO
PELAS TECNOLOGIAS DE INFORMAÇÃO**



color

Bylayer

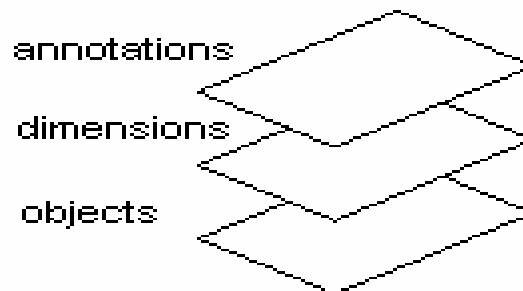
Linetype

Ltscale

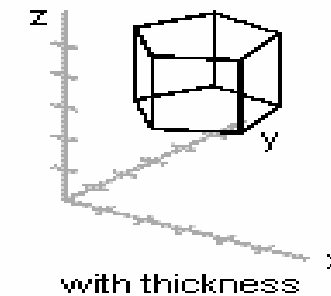
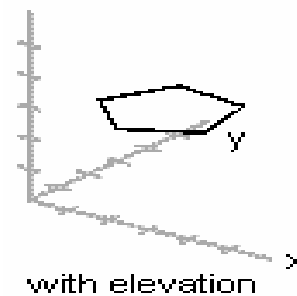
byblock

Style

Layer



elev



M2 – S2

The image shows a screenshot of the AutoCAD software interface. The top menu bar includes File, Edit, View, Insert, Format, Tools, Draw, Dimension, Modify, Express, Window, and Help. Below the menu bar is a toolbar with various icons. The Properties palette is open on the left side, showing the following settings:

General	
Color	ByLayer
Layer	0
Linetype	ByLayer
Linetype scale	1.0000
Lineweight	ByLayer
Thickness	0.0000

Plot style	
Plot style	ByColor
Plot style table	None
Plot table attached to	Model
Plot table type	Not available

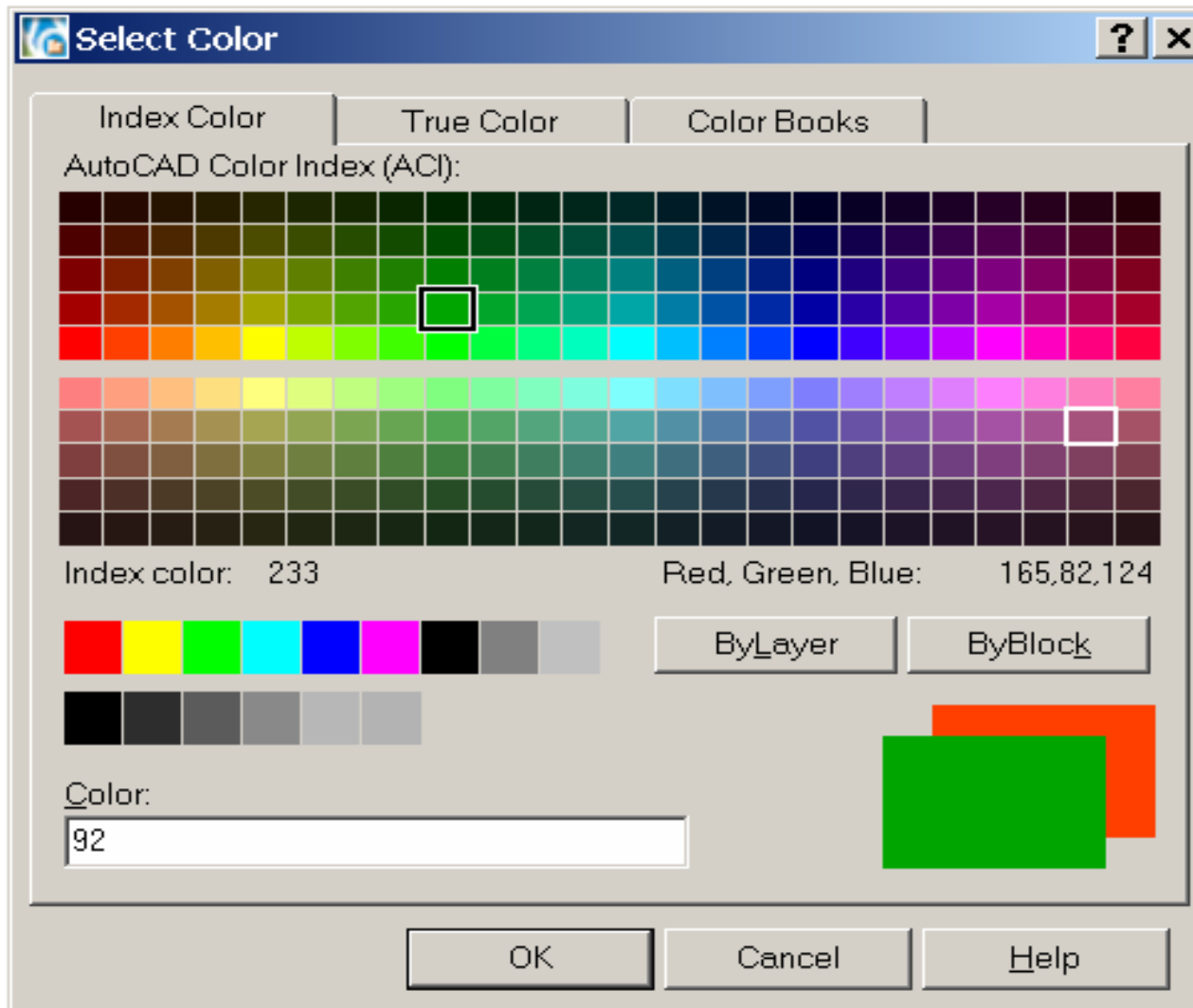
View	
Center X	30.4014
Center Y	15.1766
Center Z	0.0000
Height	30.3621
Width	60.8208

Misc	
UCS icon On	Yes
UCS icon at origin	Yes
UCS per viewport	Yes
UCS Name	

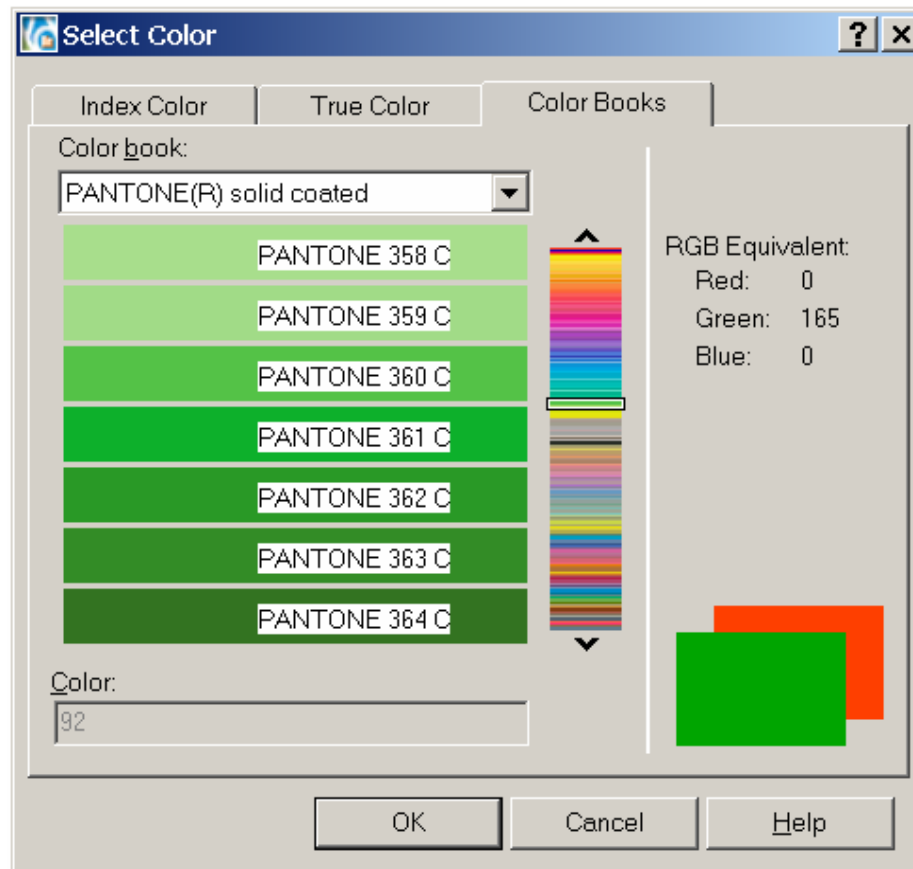
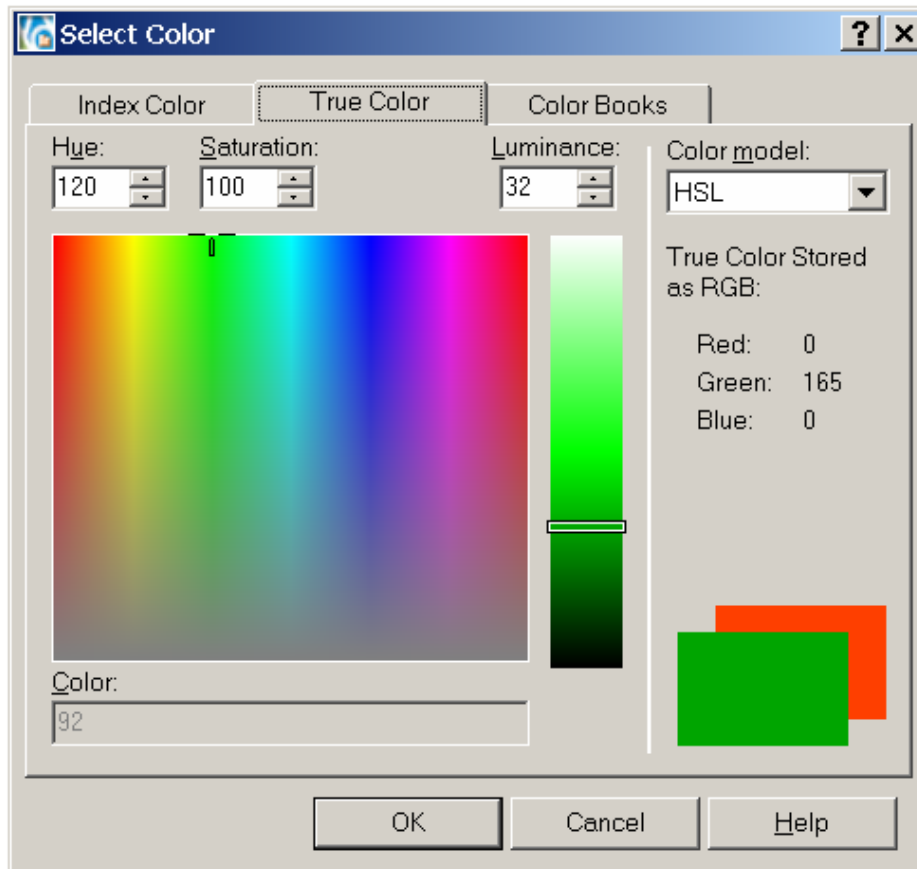
On the right side of the image, the word "Properties" is written in red. Above it, the text "CTRL" is enclosed in a red box, followed by a red box containing the number "1". To the right of these boxes is a crosshair cursor.



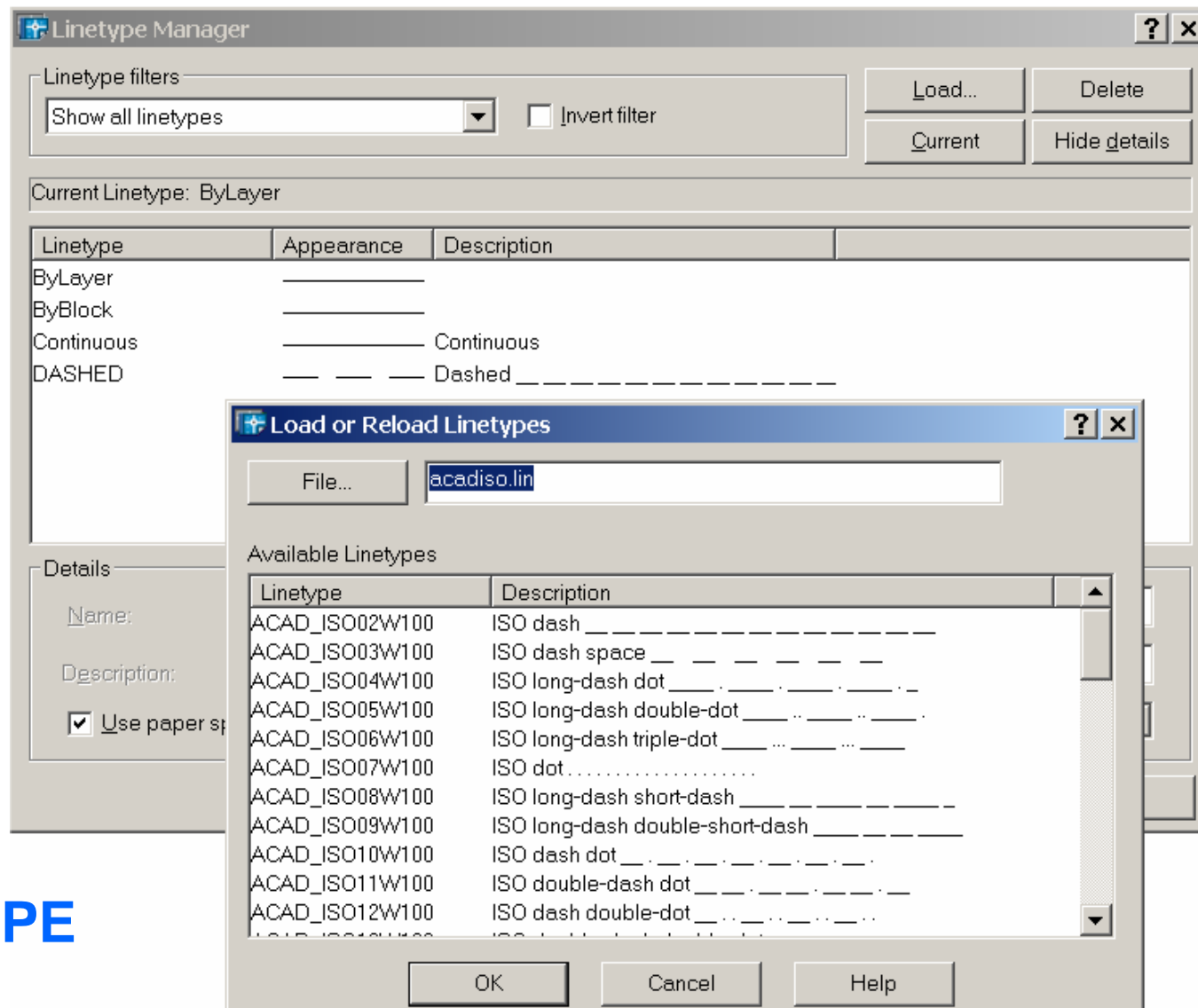
COLOR



COLOR



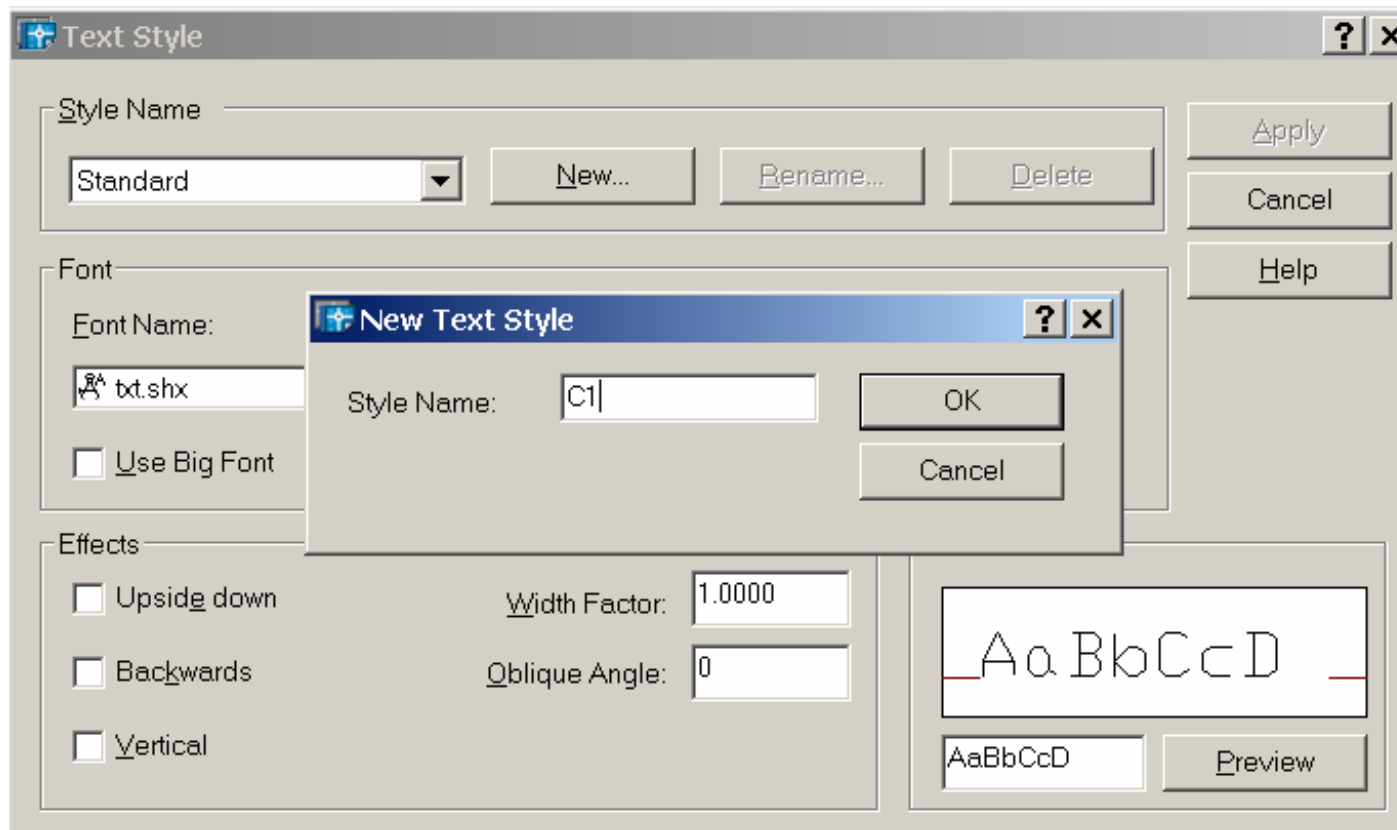
M2 – S2



LINETYPE

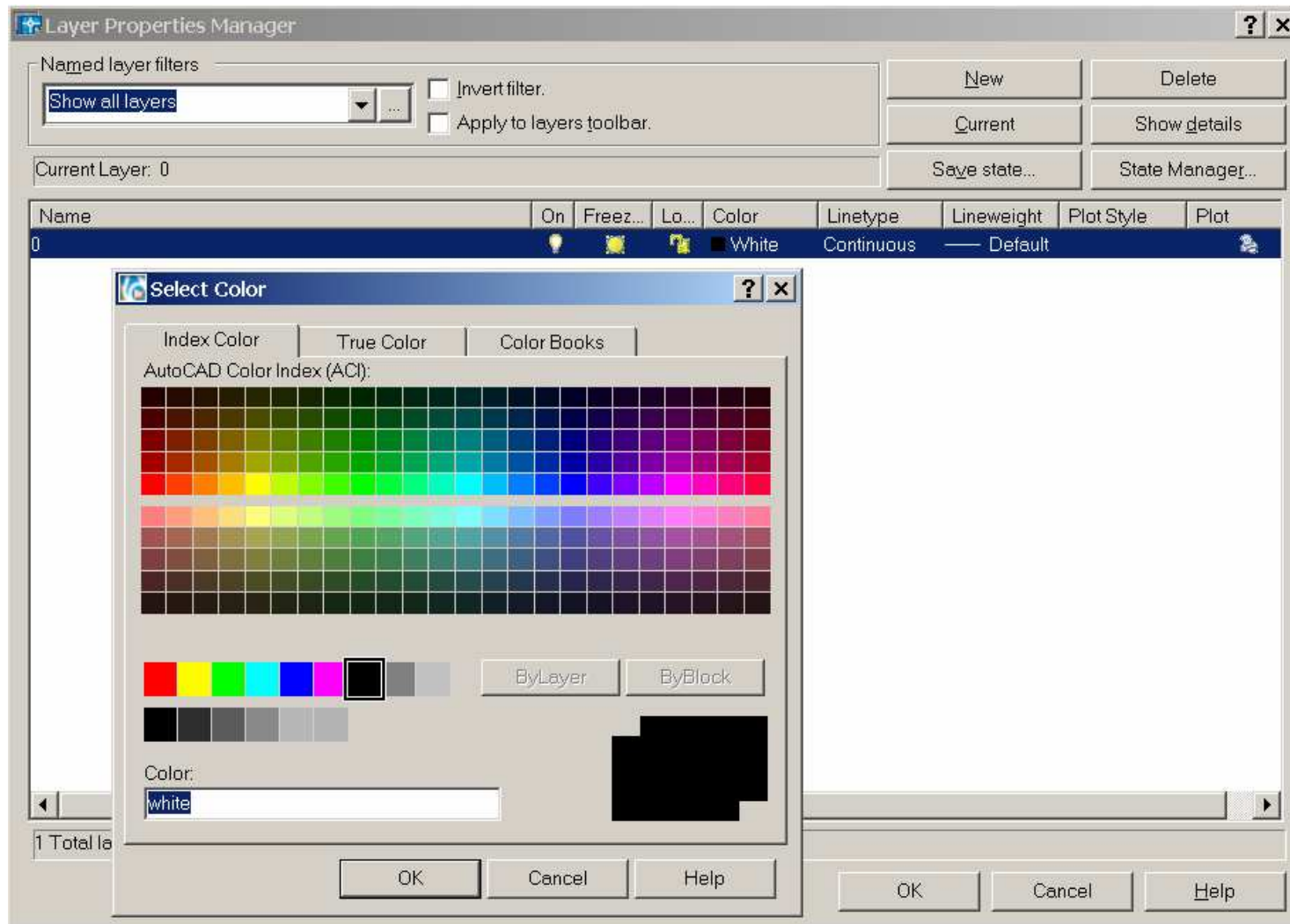


STYLE



M2 – S2

LAYER

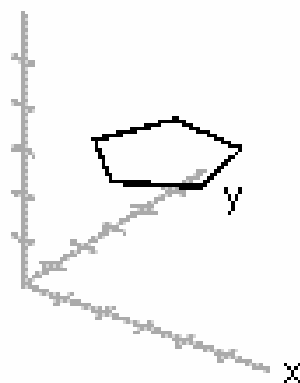


ELEV

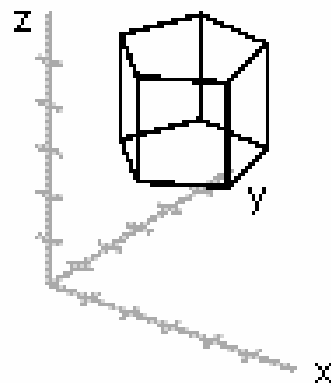
```
Command: ELEV  
Specify new default elevation <0.0000>: 5  
Specify new default thickness <0.0000>: 3  
Command:
```

664.9999, 1.6510, 5.0000

SNAP | GRID | ORTHO | POLAR | OSNAP | OTRACK | LWT | MODEL



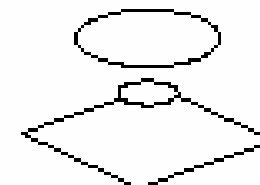
with elevation



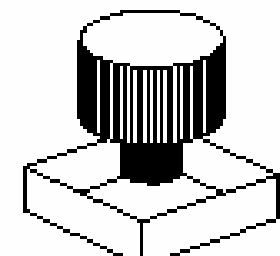
with thickness



2D objects



elevation changed



thickness added